

# SolidMatrix® 1206 Slow Blow Surface Mount Fuses



## Features:

- High inrush current withstanding capability
- Multilayer monolithic structure with glass ceramic body and silver fusing element
- Sliver termination with nickel and pure-tin solder plating, providing excellent solderability
- Standard EIA1206/EIAJ3216 size
- Compatible with both wave and reflow soldering processes
- Operating temperature range: -55°C to +125°C (with de-rating)
- RoHS compliant



## Clear-Time Characteristics ( Slow Blow):

% of current rating	Clear-time at 25 °C	
100%	4 hours (Min)	
200%	1 second (Min)	120 seconds (Max)
300%	0.1 seconds (Min)	3 seconds (Max)
800%	0.002 seconds (Min)	0.05 seconds (Max)

**Agency Approval:** Recognized Under the Components Program of Underwriters Laboratories. File Number: E232989

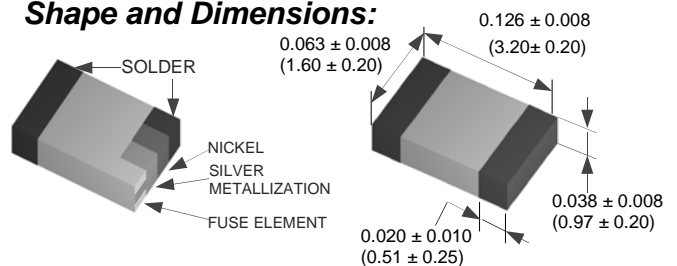
**Patents:** U.S. Patent numbers 6,034,589; 6,228,230; 6,602,766; 7,268,661 B2; and other pending patents.

## Interrupting Ratings:

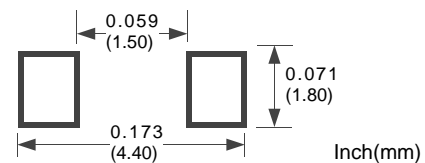
1A - 5.5A 50A at rated voltages  
6A - 8A 60A at rated voltage

**Marking(Optional):** Red Marking Character Code  
1A:E, 1.25A:F, 1.5A:G, 2A:I, 2.5A:J, 3A:K, 3.5A:L, 4A:M,  
4.5A:T, 5A:N, 5.5A:U, 6A:O, 7A:P, 8A:R

## Shape and Dimensions:



## Recommended Land Pattern:



## Ordering Information:

Part Number	Current Rating (A)	Voltage Rating (VDC)	Nominal Cold DCR ( $\Omega$ ) <sup>1</sup>	Nominal I <sup>2</sup> t (A <sup>2</sup> s) <sup>2</sup>
F1206SB1000V063T	1.0	63	0.360	0.11
F1206SB1250V063T	1.25	63	0.200	0.22
F1206SB1500V063T	1.5	63	0.150	0.23
F1206SB2000V063T	2.0	63	0.082	0.63
F1206SB2500V032T	2.5	32	0.070	0.90
F1206SB3000V032T	3.0	32	0.032	1.20
F1206SB3500V032T	3.5	32	0.028	1.60
F1206SB4000V032T	4.0	32	0.024	2.20
F1206SB4500V032T	4.5	32	0.020	3.60
F1206SB5000V032T	5.0	32	0.016	5.30
F1206SB5500V024T	5.5	24	0.014	6.40
F1206SB6000V024T	6.0	24	0.011	8.50
F1206SB7000V024T	7.0	24	0.010	10.0
F1206SB8000V024T	8.0	24	0.009	16.9

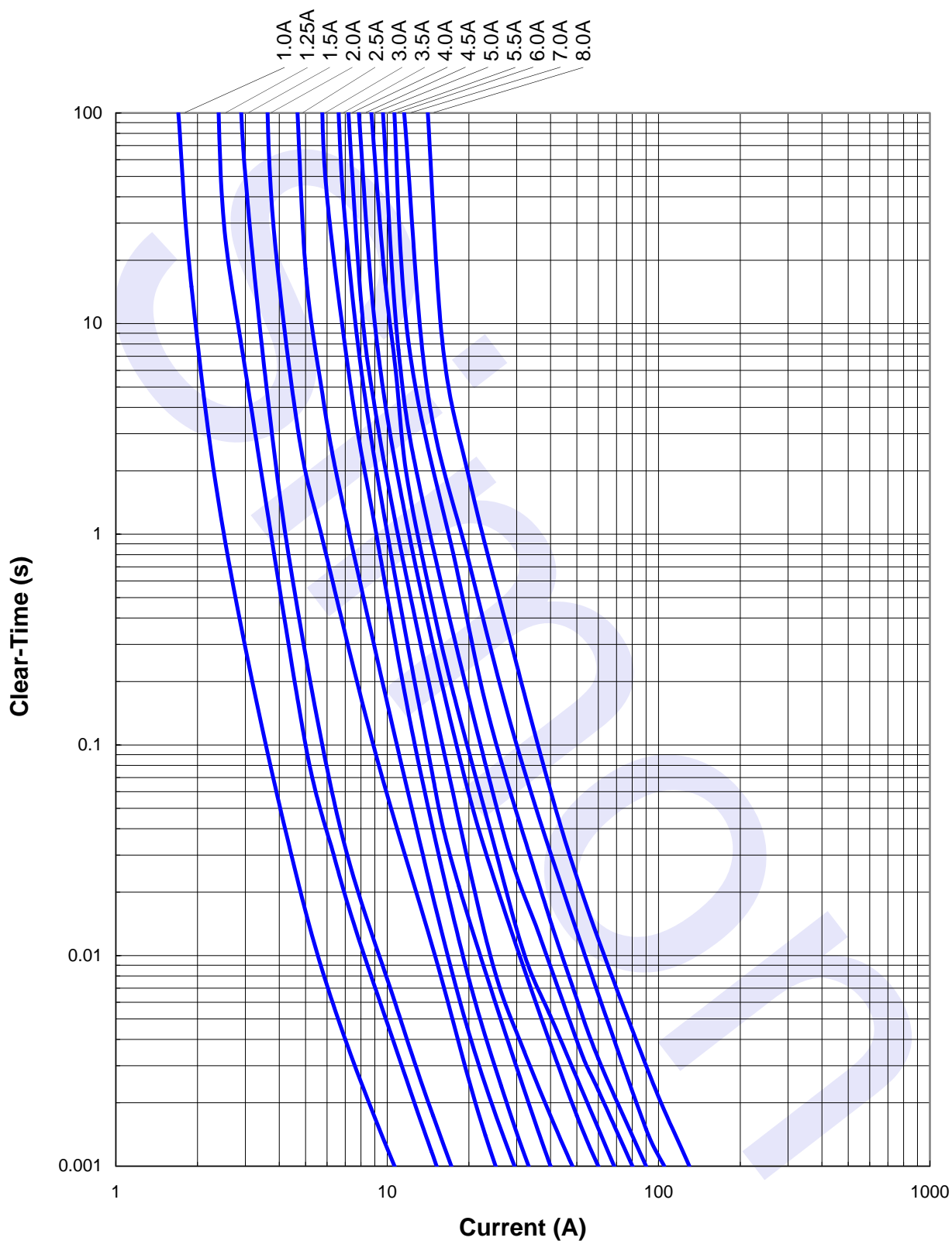
1. Measured at  $\leq 10\%$  of rated current and 25°C ambient

2. Melting I<sup>2</sup>t at 0.001 sec clear-time

# SolidMatrix® 1206 Slow Blow Surface Mount Fuses



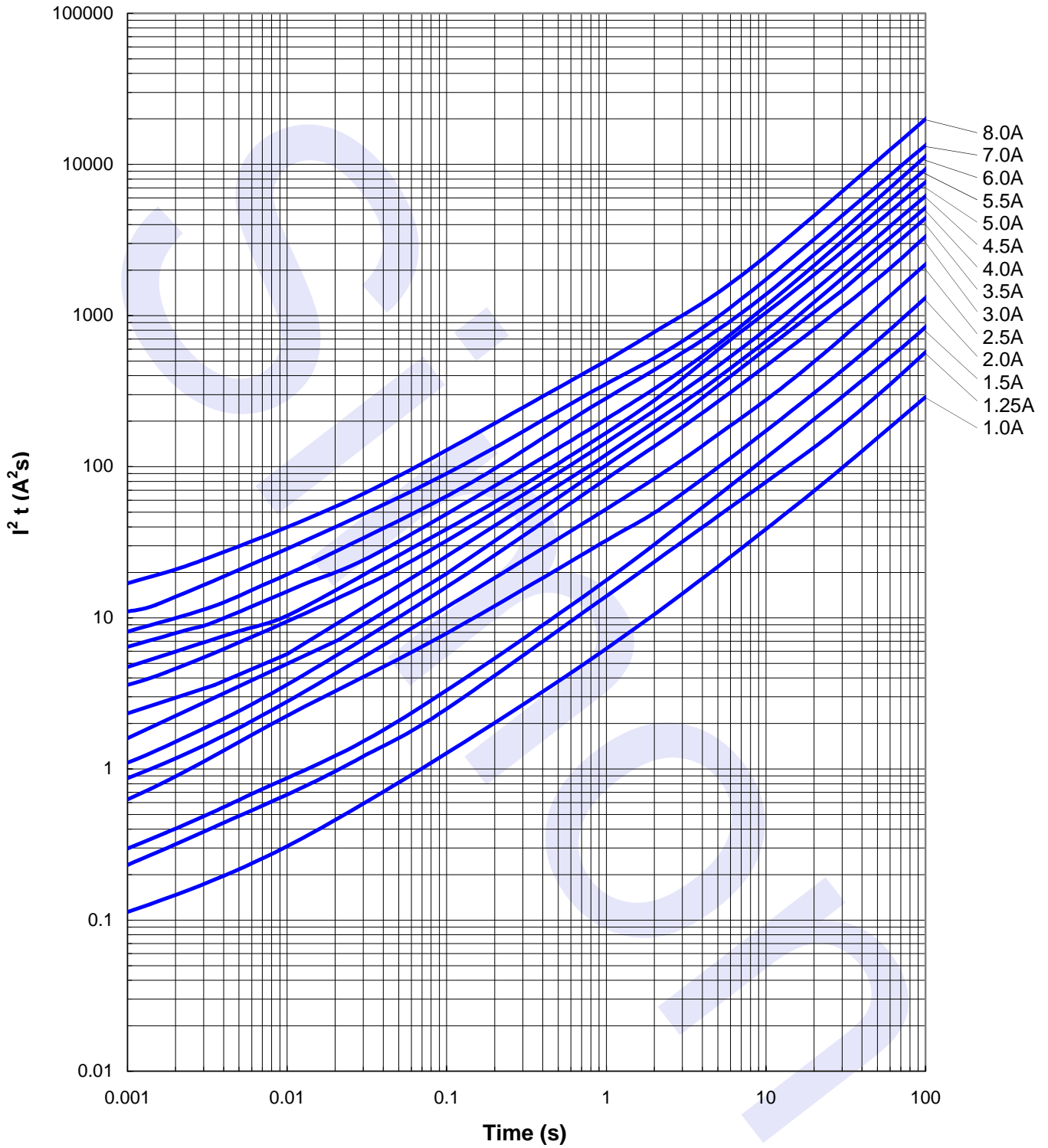
### Average Clear-Time Curves



# SolidMatrix® 1206 Slow Blow Surface Mount Fuses



Average  $I^2t$  vs.  $t$  Curves

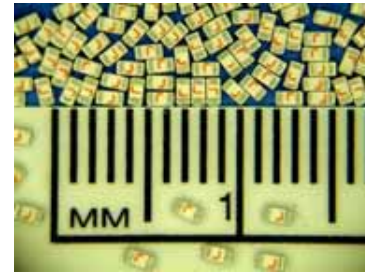


# SolidMatrix® 0603 Slow Blow Surface Mount Fuses

**NEW!**


## Features:

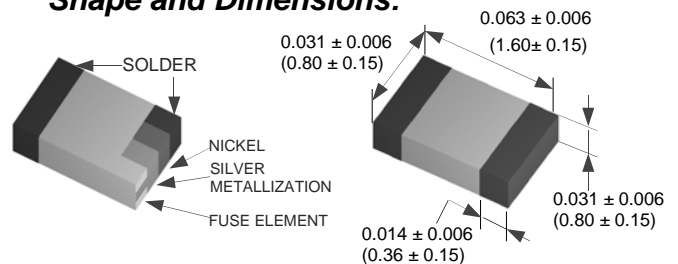
- High inrush current withstanding capability
- Ceramic Monolithic structure
- Silver fusing element and silver termination with nickel and tin plating
- RoHS compliant materials
- Standard EIA0603 / EIAJ1608 size
- Symmetrical design with marking on both sides (optional)
- Operating temperature: -55°C to +125°C (with de-rating)



## Clear-Time Characteristics:

% of Current Rating	Opening Time at 25°C	
	Min.	Max.
100%	4 hours	
200%	1 sec	120 sec
300%	0.1 sec	3 sec
800% (1-1.5A)	0.0005 sec	0.05 sec
800% (2-5A)	0.001 sec	0.05 sec

## Shape and Dimensions:



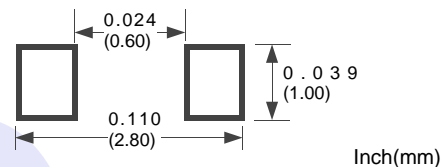
**Agency Approval:** Recognized Under the Components Program of Underwriters Laboratories. File Number: E232989

**Patents:** U.S. Patent numbers 6,034,589; 6,228,230; 6,602,766; 7,268,661 B2; and other pending patents.

## Interrupting Ratings:

1A - 5A    50A at rated voltage

## Recommended Land Pattern:



**Marking(Optional):** Red Marking Character Code  
 1A:E, 1.5A:G, 2A:I, 2.5A:J, 3A:K, 3.5A:L, 4A:M,  
 4.5A:T, 5A:N

## Ordering Information:

Part Number	Current Rating (A)	Voltage Rating (VDC)	Nominal Cold DCR ( $\Omega$ ) <sup>1</sup>	Nominal $I^2t$ ( $A^2s$ ) <sup>2</sup>
F0603SB1000V032T	1.00	32	0.200	0.093
F0603SB1500V032T	1.50	32	0.100	0.18
F0603SB2000V032T	2.00	32	0.052	0.32
F0603SB2500V032T	2.50	32	0.041	0.63
F0603SB3000V032T	3.00	32	0.031	0.87
F0603SB3500V032T	3.50	32	0.021	1.20
F0603SB4000V032T	4.00	32	0.017	2.30
F0603SB4500V032T	4.50	32	0.015	2.70
F0603SB5000V032T	5.00	32	0.013	3.20

1. Measured at  $\leq 10\%$  of rated current and 25°C ambient

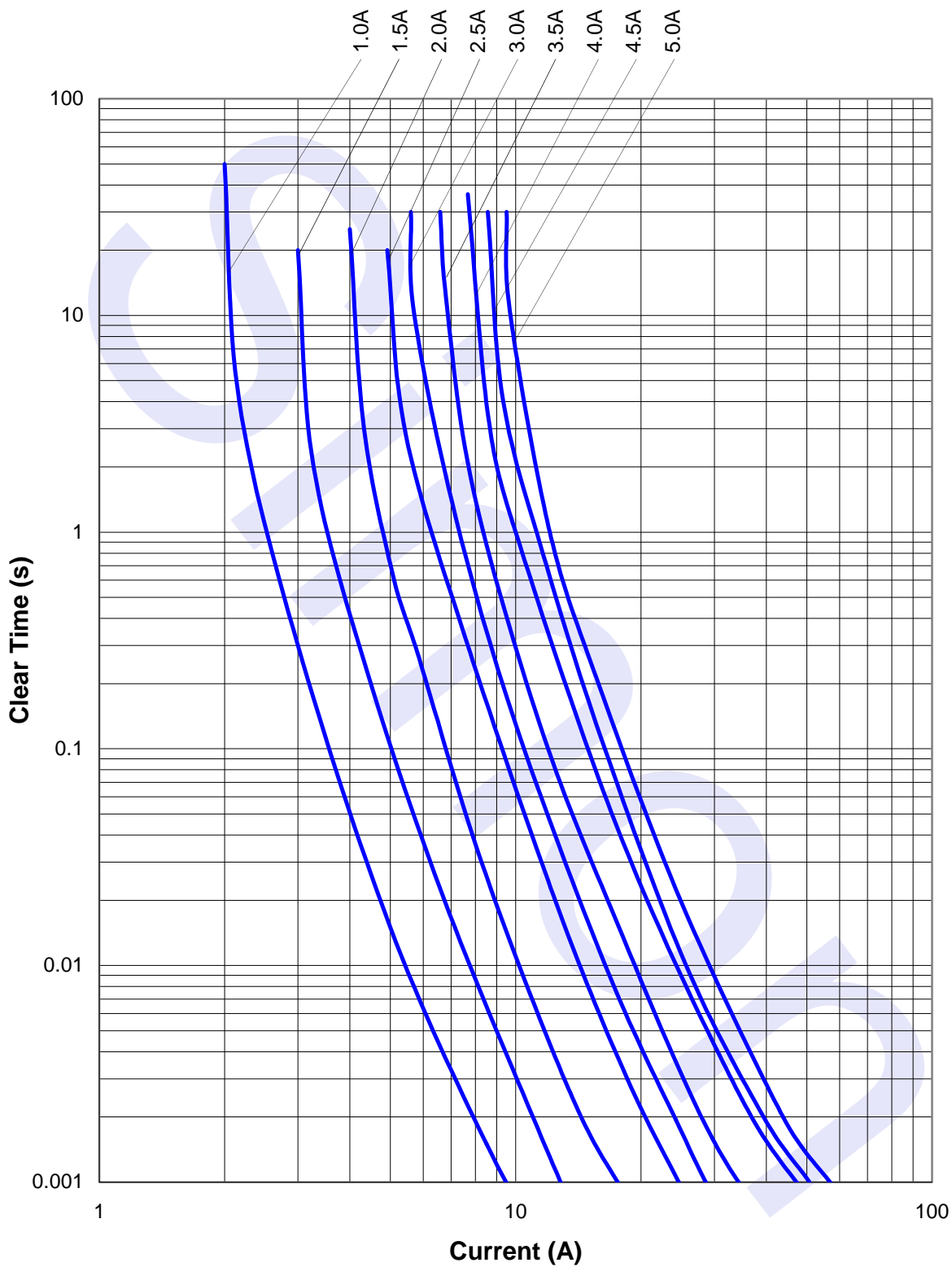
2. Melting  $I^2t$  at 0.001 sec clear-time

# SolidMatrix® 0603 Slow Blow Surface Mount Fuses

**NEW!**



Average Clear-Time Curves



# SolidMatrix® 0603 Slow Blow Surface Mount Fuses

**NEW!**



### Average $I^2t$ vs. $t$ Curves

