

PS 系列功率电感 PS Series SMD Power Inductors



特征 FEATURES

- 超薄
- Low profile
- 屏蔽结构
- Magnetic shielded
- 适合于表面贴装, 适合于回流焊
- SMT type, suitable for solder reflow

应用 APPLICATIONS

- 移动通信, 笔记本电脑
- Portable communication equipment, Notebook Computer
- DC/DC 转换
- DC/DC converters

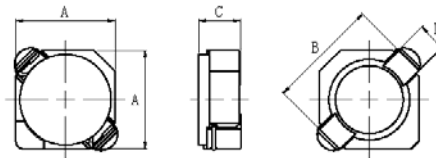
产品规格型号表示方法 ORDERING CODE

PS	5020	—	150	M	T
①	②		③	④	⑤

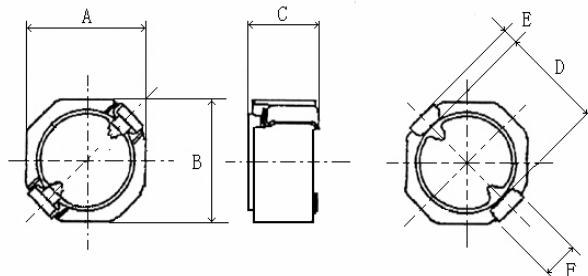
① 产品代号 Code		② 规格尺寸 Dimensions (L×W×T) (mm)		③ 感量(μH) Inductance		④ 误差 Tolerance		⑤ 包装方式 Packaging Style	
PS	PS 系列 功率电感	3011	3.2×3.3×1.2	1R0	1	M	±20%	T	Tape&Reel
		3014	3.2×3.3×1.55	100	10	N	±30%	B	Bulk
		4018	4.0×4.4×1.8	101	100				
		5020	5.0×5.0×2.0	102	1000				
		5030	5.0×5.0×3.0						
		6030	6.0×6.0×3.0						

外形尺寸 Dimensions

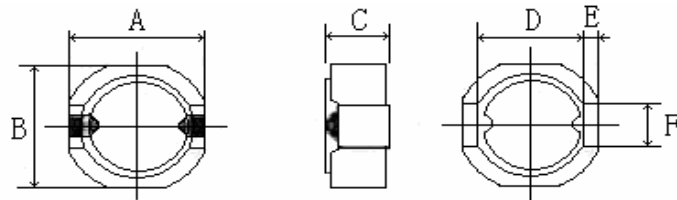
单位(Unit): mm



型号 Part	A	B	C	D
PS3011	3.0±0.20	3.3	1.2±0.20	1.0
PS3014	3.0±0.20	3.3	1.4±0.20	1.0
PS4018	4.0±0.20	4.4	1.8±0.30	1.1



型号 Part	A	B	C	D	E	F
PS5020	5.0±0.3	5.0±0.3	2.0±0.3	4.2±0.3	0.6±0.3	1.4±0.3
PS5030	5.0±0.3	5.0±0.3	3.0±0.3	4.2±0.3	0.6±0.3	1.4±0.3



型号 Part	A	B	C	D	E	F
PS6030	6.0±0.3	6.0±0.3	3.0±0.3	4.8±0.3	0.6±0.3	2.0±0.3

电性能参数 Electrical Characteristics

PS3011 Series

Part Number	Inductance (μH)	Tolerance	Test Freq.	DCR (Ω) Max	Isat (A)
PS3011-1R0NT	1.0	±30%	100kHz	0.0626	1.50
PS3011-1R5NT	1.5	±30%	100kHz	0.0843	1.25
PS3011-2R2NT	2.2	±30%	100kHz	0.0955	1.10
PS3011-2R7NT	2.7	±30%	100kHz	0.120	0.92
PS3011-3R3NT	3.3	±30%	100kHz	0.154	0.88
PS3011-4R7NT	4.7	±30%	100kHz	0.168	0.70
PS3011-5R6NT	5.6	±30%	100kHz	0.264	0.65
PS3011-6R8NT	6.8	±30%	100kHz	0.284	0.60
PS3011-8R2NT	8.2	±30%	100kHz	0.376	0.52
PS3011-100MT	10	±20%	100kHz	0.428	0.48
PS3011-150MT	15	±20%	100kHz	0.663	0.40
PS3011-180MT	18	±20%	100kHz	0.730	0.36
PS3011-220MT	22	±20%	100kHz	0.801	0.35

PS3014 Series

Part Number	Inductance (μH)	Tolerance	Test Freq.	DCR (Ω) Max	Isat (A)
PS3014-1R0NT	1.0	±30%	100kHz	0.056	1.80
PS3014-1R5NT	1.5	±30%	100kHz	0.079	1.55
PS3014-2R2NT	2.2	±30%	100kHz	0.094	1.30
PS3014-2R5NT	2.5	±30%	100kHz	0.125	1.00
PS3014-3R3NT	3.3	±30%	100kHz	0.125	1.00
PS3014-4R7NT	4.7	±30%	100kHz	0.169	1.00
PS3014-5R6NT	5.6	±30%	100kHz	0.175	0.65
PS3014-100MT	10	±20%	100kHz	0.294	0.30
PS3014-470MT	47	±20%	100kHz	1.488	0.30

PS4018 Series

Part Number	Inductance (μH)	Tolerance	Test Freq.	DCR (Ω) Max	Isat (A)
PS4018-1R5NT	1.5	±30%	100kHz	0.050	1.55
PS4018-2R2NT	2.2	±30%	100kHz	0.070	1.20
PS4018-3R3NT	3.3	±30%	100kHz	0.110	1.10
PS4018-4R7NT	4.7	±30%	100kHz	0.132	0.90
PS4018-6R8NT	6.8	±30%	100kHz	0.170	0.73
PS4018-100MT	10	±20%	100kHz	0.210	0.55
PS4018-150MT	15	±20%	100kHz	0.295	0.45

Part Number	Inductance (μH)	Tolerance	Test Freq.	DCR (Ω) Max	Isat (A)
PS4018-220MT	22	±20%	100kHz	0.430	0.40
PS4018-330MT	33	±20%	100kHz	0.675	0.32
PS4018-390MT	39	±20%	100kHz	0.690	0.27
PS4018-470MT	47	±20%	100kHz	1.050	0.25
PS4018-680MT	68	±20%	100kHz	1.500	0.22
PS4018-820MT	82	±20%	100kHz	1.700	0.20
PS4018-101MT	100	±20%	100kHz	1.800	0.22
PS4018-221MT	220	±20%	100kHz	6.000	0.12

Isat: 饱和电流, 加 Isat 时, 电感值相对公称值下降≤35%

Isat: Saturation Current, the current when the inductance becomes 35% lower than its initial value.

PS5020 Series

Part Number	Inductance (μH)	Tolerance	Test Freq.	DCR (Ω) Max	Isat (A)	Irms (A)
PS5020-1R0NT	1.0	±30%	100kHz	0.044	2.87	2.87
PS5020-1R2NT	1.2	±30%	100kHz	0.044	2.87	2.87
PS5020-2R2NT	2.2	±30%	100kHz	0.059	2.17	2.05
PS5020-3R3NT	3.3	±30%	100kHz	0.073	1.79	1.81
PS5020-4R7NT	4.7	±30%	100kHz	0.087	1.52	1.53
PS5020-6R8NT	6.8	±30%	100kHz	0.130	1.27	1.37
PS5020-100MT	10	±20%	100kHz	0.180	1.02	1.09
PS5020-150MT	15	±20%	100kHz	0.275	0.85	0.90
PS5020-220MT	22	±20%	100kHz	0.300	0.74	0.82
PS5020-330MT	33	±20%	100kHz	0.455	0.59	0.60
PS5020-470MT	47	±20%	100kHz	1.140	0.49	0.44
PS5020-680MT	68	±20%	100kHz	1.220	0.40	0.41
PS5020-101MT	100	±20%	100kHz	1.500	0.31	0.31
PS5020-171MT	170	±20%	100kHz	3.000	0.25	0.25

PS5030 Series

Part Number	Inductance (μH)	Tolerance	Test Freq.	DCR (Ω) Max	Isat (A)	Irms (A)
PS5030-1R2NT	1.2	±30%	100kHz	0.030	5.17	4.07
PS5030-2R2NT	2.2	±30%	100kHz	0.036	3.90	3.30
PS5030-3R3NT	3.3	±30%	100kHz	0.040	3.15	2.83
PS5030-4R7NT	4.7	±30%	100kHz	0.060	2.49	2.51
PS5030-6R8NT	6.8	±30%	100kHz	0.085	2.01	2.06
PS5030-100MT	10	±20%	100kHz	0.108	1.77	1.76
PS5030-150MT	15	±20%	100kHz	0.150	1.40	1.37
PS5030-220MT	22	±20%	100kHz	0.208	1.15	1.01
PS5030-330MT	33	±20%	100kHz	0.257	0.96	0.94
PS5030-470MT	47	±20%	100kHz	0.450	0.83	0.80
PS5030-680MT	68	±20%	100kHz	0.600	0.68	0.65
PS5030-101MT	100	±20%	100kHz	0.801	0.58	0.55
PS5030-151MT	150	±20%	100kHz	1.200	0.30	0.31
PS5030-221MT	220	±20%	100kHz	2.000	0.20	0.21

PS6030 Series

Part Number	Inductance (μH)	Tolerance	Test Freq.	DCR (Ω) Max	Isat (A)	Irms (A)
PS6030-1R0NT	1.0	±30%	100kHz	0.032	3.59	4.03
PS6030-1R5NT	1.5	±30%	100kHz	0.036	2.93	3.63
PS6030-2R2NT	2.2	±30%	100kHz	0.046	2.42	3.30
PS6030-3R3NT	3.3	±30%	100kHz	0.054	1.89	2.83
PS6030-4R7NT	4.7	±30%	100kHz	0.068	1.66	2.45
PS6030-6R8NT	6.8	±30%	100kHz	0.115	1.45	2.20
PS6030-100MT	10	±20%	100kHz	0.150	1.14	1.77
PS6030-120MT	12	±20%	100kHz	0.165	1.04	1.70
PS6030-150MT	15	±20%	100kHz	0.175	0.93	1.55
PS6030-180MT	18	±20%	100kHz	0.200	0.85	1.41
PS6030-220MT	22	±20%	100kHz	0.265	0.77	1.23
PS6030-270MT	27	±20%	100kHz	0.365	0.70	1.08
PS6030-330MT	33	±20%	100kHz	0.420	0.63	0.99
PS6030-390MT	39	±20%	100kHz	0.480	0.58	0.95
PS6030-470MT	47	±20%	100kHz	0.560	0.53	0.84
PS6030-560MT	56	±20%	100kHz	0.670	0.48	0.76
PS6030-680MT	68	±20%	100kHz	0.770	0.44	0.69
PS6030-820MT	82	±20%	100kHz	1.150	0.40	0.61
PS6030-101MT	100	±20%	100kHz	1.300	0.36	0.54
PS6030-151MT	150	±20%	100kHz	1.530	0.31	0.42
PS6030-221MT	220	±20%	100kHz	2.750	0.26	0.36
PS6030-271MT	270	±20%	100kHz	3.800	0.20	0.30
PS6030-331MT	330	±20%	100kHz	7.500	0.28	0.28
PS6030-471MT	470	±20%	100kHz	9.000	0.18	0.20

Isat: 饱和电流, 加 Isat 时, 电感值相对公称值下降≤30%

Isat: Saturation Current, the current when the inductance becomes 30% lower than its initial value.

Irms: 温升电流, 加 Irms 时, 器件温度升高≤40℃

Irms: Temperature Rise Current, the current when temperature of coil increases up to 40℃.