

NEW

The DC500VBT3050A has been developed to protect the main battery circuits of electric, hybrid, and fuel cell vehicles. Employing a wire-type fuse-element, this fuse realizes a high rated current of 280 A and is lead-free.

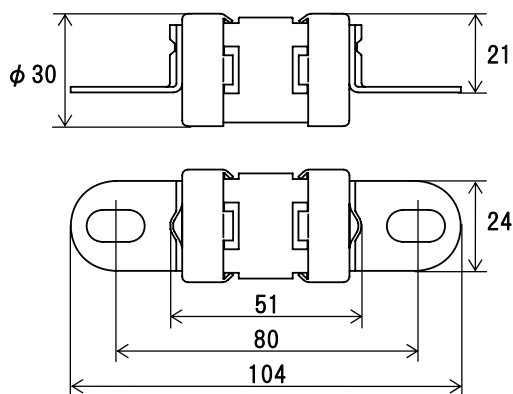
DC500VBT3050A

RoHS ~~Pb~~

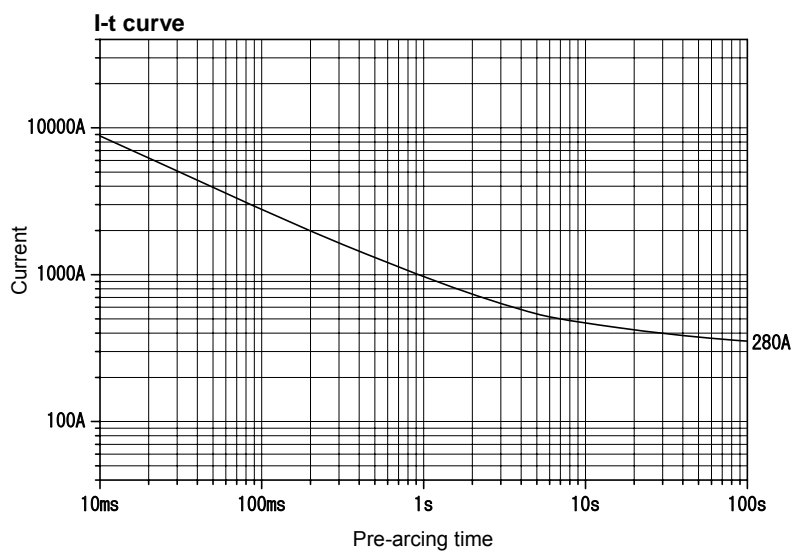
DC500V



Scale: 1/2



Unit: mm



The I-t curve above is based on the average values of measurements obtained under testing conditions specified by our company. The information is for reference purposes only, and is not intended to infer any guarantees of performance.

Rated voltage	Certification	Rated current (I_N)	Rated breaking current		Current carrying capacity $0.5I_N$	Temp. rise $0.5I_N$	Overload operation $2.0I_N$
DC500V	—	280A	2000A	Resistive circuit	Until temperature stabilization occurs.	50K or less	Within 2min